



PRECISION MACHINING of *Sapphire* and *Ceramic Materials*

VISIT **DESIGNFAX'S**
POSTCARDS
HERE

Manufacturing
Center

Mfg
Resources

DesignFax

MAN - Modern
Applications News

MetalFax

Q/M

Tooling &
Production

Designfax Links

[Archives](#)
[Buyers Guide](#)
[Contact Us](#)
[Events Calendar](#)
[Features](#)
[Media Kit](#)
[Reader Favorites](#)
[Readers Service](#)
[Reprints](#)
[Subscriptions](#)

DESIGNFAX

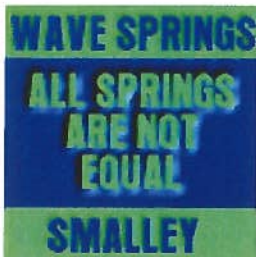
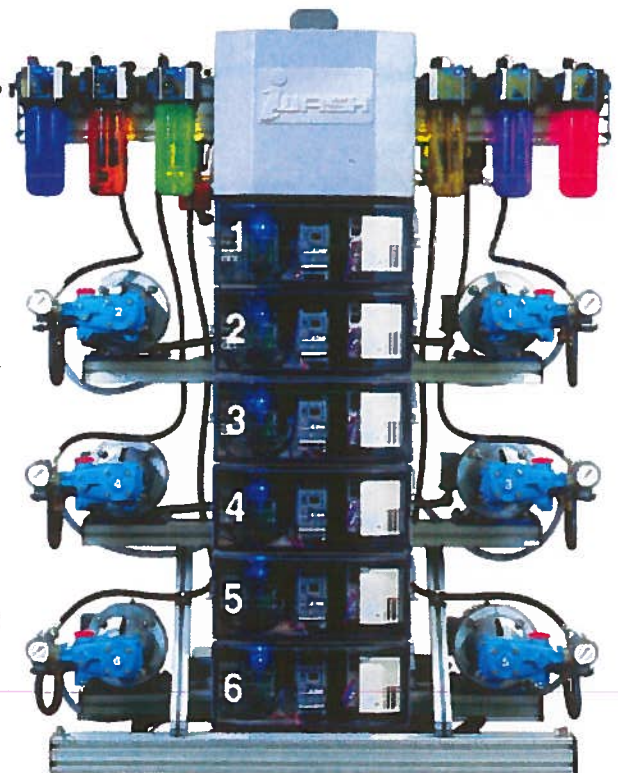
WHY WE USE

...Variable Frequency Drives

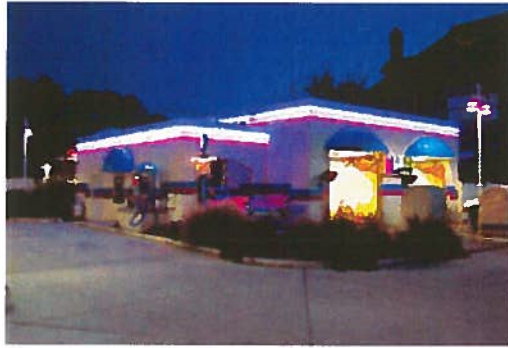
Washing Equipment Technologies is a manufacturer and developer of self-serve and distributors for touch-free car wash equipment systems. Their customer list includes Classy Chassy Car Wash, Laserwash Car Wash Inc, Hess, Mobil/Exxon, Sunoco, and Jiffy Lube, BFS Foods, and Popular Chains Precision Wash. iWash, the company's latest self-serve coin-operated car wash equipment, is a patent-pending system that's meeting with great success. Don Scordo, founder and president states, "We have over 100 bays operating presently, with orders coming in every week; depending on how we set up distribution, we hope to triple that next year."

What's the biggest difference between the iWash and other similar systems? Scordo mentions simplicity, a self-contained, single-pump design, and easy installation. "It was an idea I've had for a long time; I've seen the self-serve industry stuck in the same mode for too long, and it pushed me to develop my idea into a product," explains Scordo, who adds that finding the right components was crucial to bringing his invention to actual implementation.

Scordo describes the Variable Frequency Drive's job as controlling the speed of metering and self-serve high pressure pumps, since different car wash components (such as tire scrubbers, wands and sprayers) operate at different pressures. Each inverter is set up to use three separate preset speeds (low/medium/high); with each inverter's preset speed providing the necessary pressure and flow to apply different products. Elaborates Scordo, "Our iWash controller communicates with



the VFD to speed up to purge the line for each product and/or to slow down the pump so we can change the pressure we need for the function the customer chooses. The controller also directs the flow of pressure and solution, either to a brush or to a spray gun.”



As Scordo summarizes, “What’s most unique option is that the controller can actually blend solutions, creating its own personality with scents and colors. Pulsing two different colors creating a rainbow of foam on the car or a blend of smells in the bay keeps the customers coming back... or spending more time in the bay!”

Learning of a VFD of the right physical size, offering the right performance and at the right cost was a crucial step, and Scordo credits AC Technology’s VFDs for being key to making the iWash. The SCF Series physical size, low cost and EPM programmability were factors in the decision-making process. The EPM, or Electronic Programming Module, is a little pluggable “chip” that lets the user program an AC Tech drive’s memory for the different pump speeds, copy it in two seconds, archive it, clone it, personalize it...allowing drive production and programming to become streamlined and error-free. This feature effectively provides a secure backup on every drive and cuts down on downtime.

“The EPM reduces the OEM’s service expenses, since it keeps the factory default of the drive configuration, as it was programmed at the factory,” explains AC Tech’s Northeast district manager John J. Parker Jr. “If a Washing Equipment Technology customer changes the program and ends up with a malfunctioning bay, they can simply reset the drive to the way it was when originally shipped. The result is a reduction of unnecessary field service visits, and for the customer, no downtime!”

—RM

AC Tech,
www.rsleads.com/410df-275

Would You Like A Reprint of An Article?

[CLICK HERE!](#)

[Home](#) [Mfg Resources](#) [Designfax](#)
[Modern Applications News](#) [Metfax](#) [QM](#) [Tooling & Production](#)

Designfax

6001 Cochran Rd., Suite 104 Solon, OH 44139 Phone: 440.248.1125 Fax: 440.248.0187

To request a media kit or back issues click [here](#).

(US & Canadian requests only)

Please report problems with this site to the Designfax [site manager](#).

Copyright © 2004 by [Nelson Publishing, Inc.](#). All rights reserved. Reproduction Prohibited.
 View our terms of use and [privacy policy](#).